



**POLITEKNIK MERLIMAU MELAKA**

**WIFI POLYMER**

**USER GUIDE**

## **PERHATIAN**

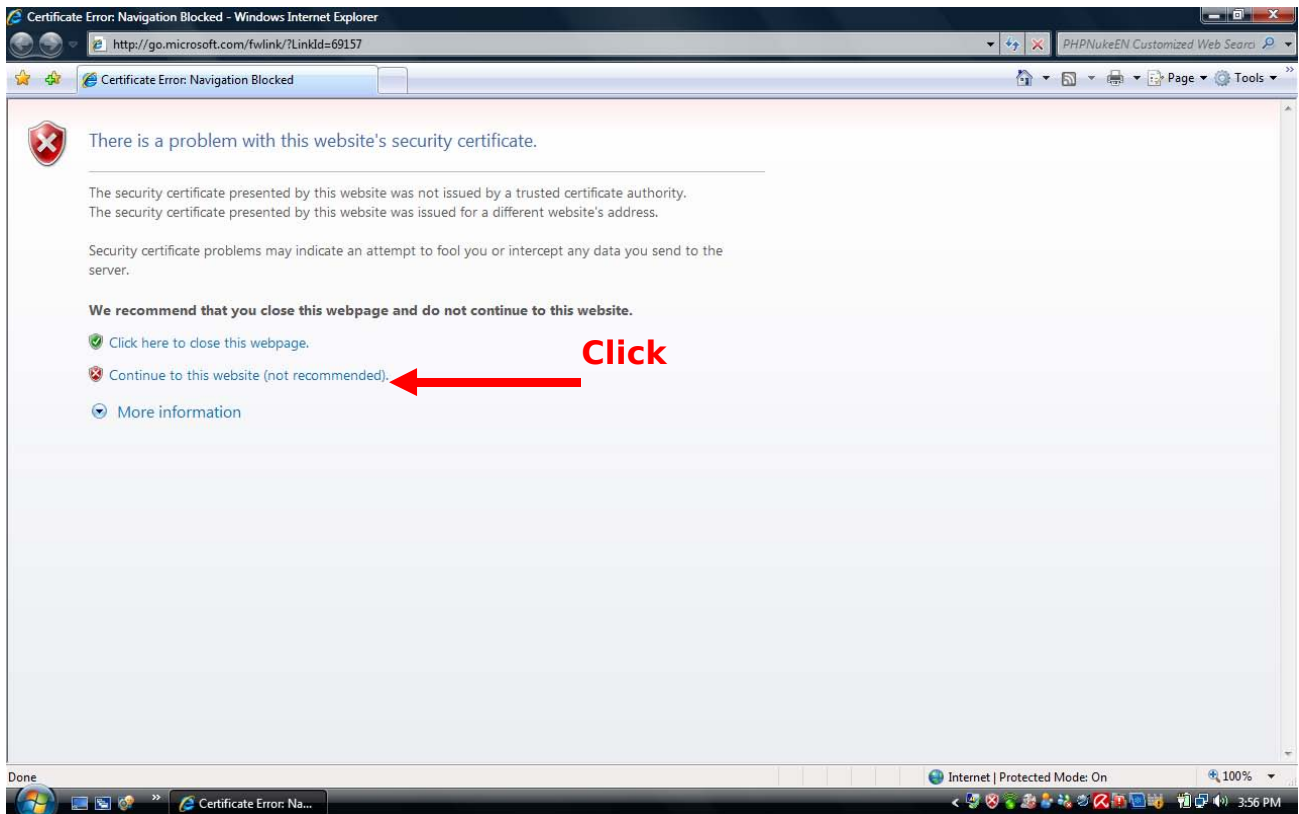
**PENGUNAAN WIFI POLYMER DIBERI SECARA PERCUMA  
OLEH PIHAK POLITEKNIK MERLIMAU MELAKA**

**PENGUNAAN WIFI POLYMER BERMULA DARI  
8.00AM HINGGA 11.00PM**

### **PENGUNA DILARANG :**

- **MELAYARI LAMAN WEB LUCAH**
- **MELAYARI PEMAINAN INTERNET “ GAMES ONLINE”**
- **MENONTON “TV ONLINE”**
- **MENDENGAR “RADIO ONLINE”**
- **MUAT TURUN FILE DENGAN MENGGUNAKAN PERISIAN  
“PEER TO PEER” SEPerti (BIT TORRENT, LIME WIRE)**
- **PENGUNA DILARANG SAMA SEKALI  
MENYALAHGUNAKAN KEMUDAHAN WIFI POLYMER  
UNTUK KEGIATAN-KEGIATAN YANG MENYALAH  
UNDANG-UNDANG SIBER.**
  - **SPAMMING**
  - **SCAMMING**
  - **HACKING**
  - **DDOS ATTACK**
- **PENGUNA JUGA TIDAK DIGALAKKAN BERCHATting**

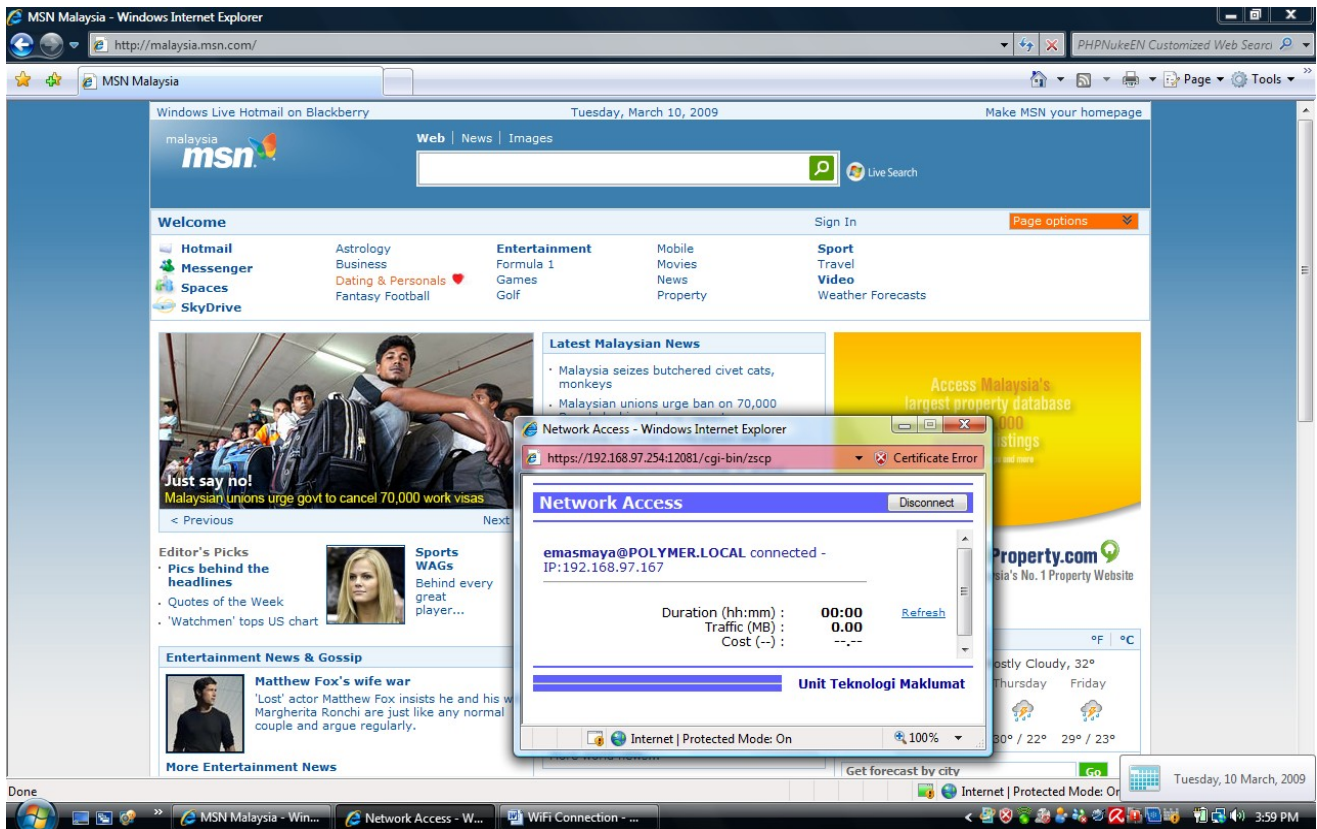
## Internet Explorer 7.0



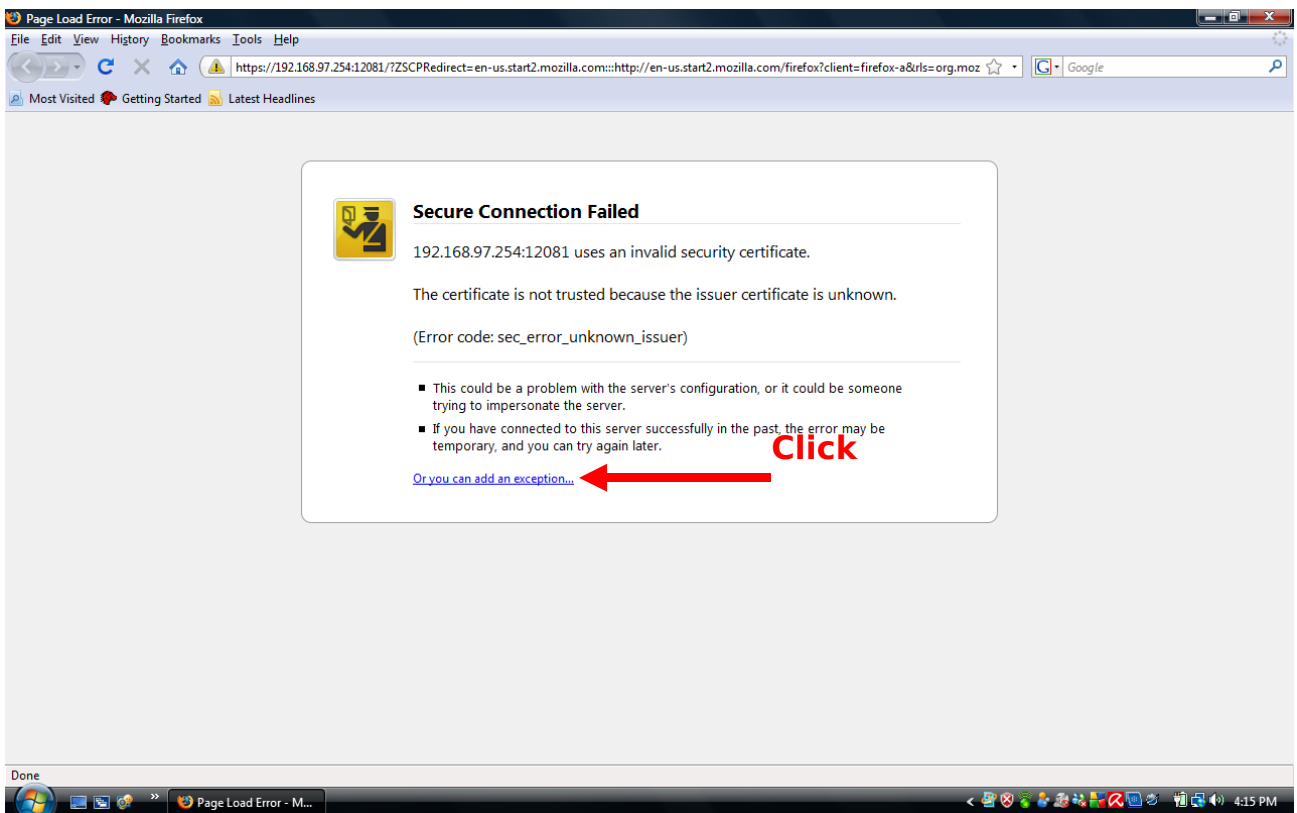
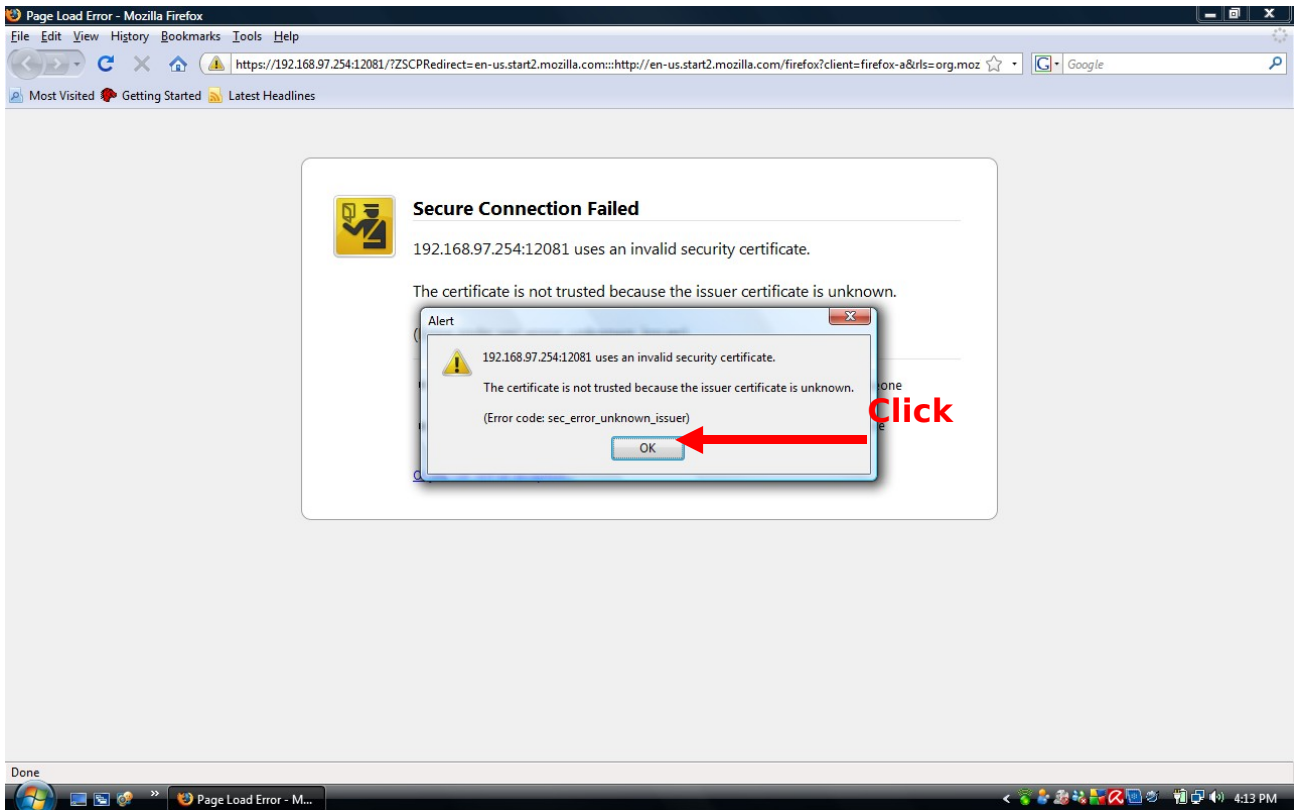
## Key In Username and Password

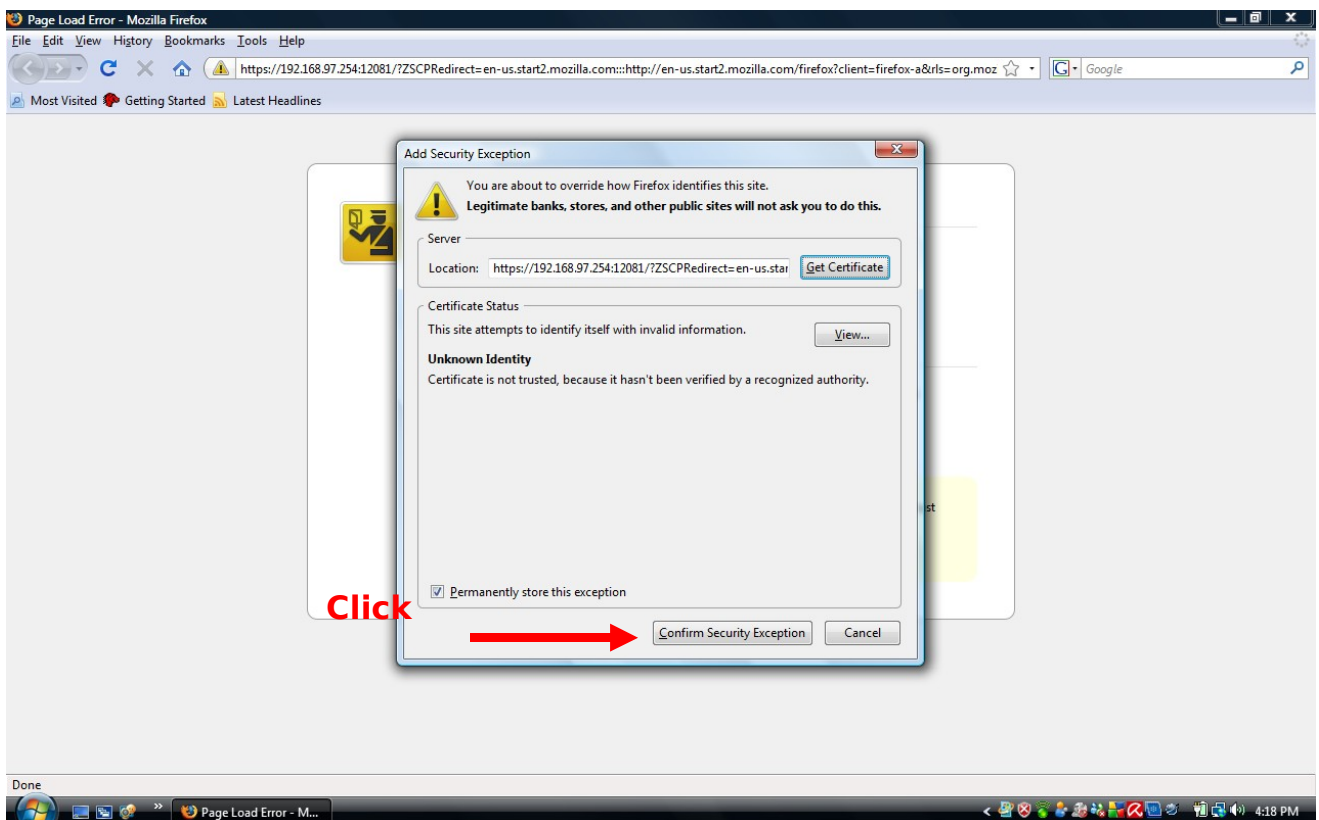
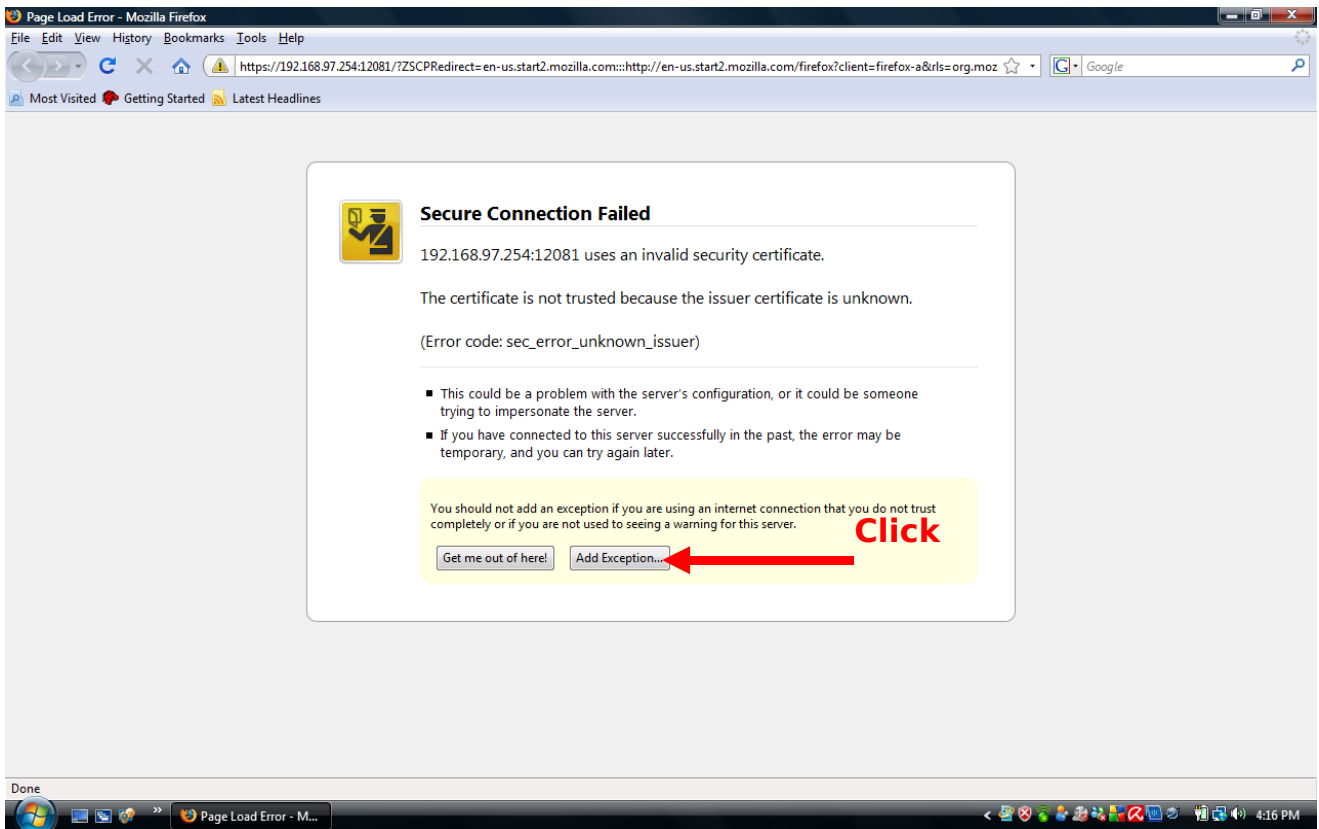


# Already Connected

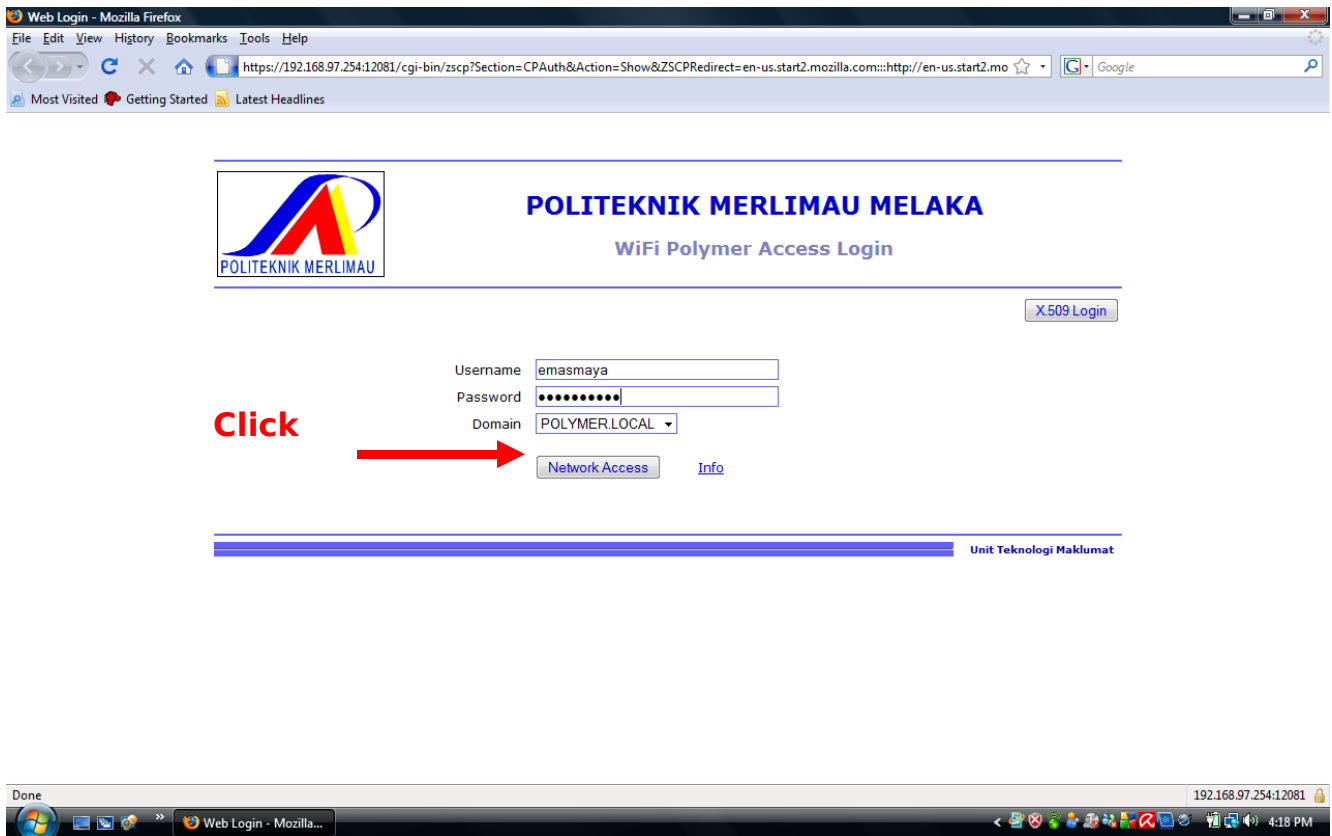


# Mozilla Firefox

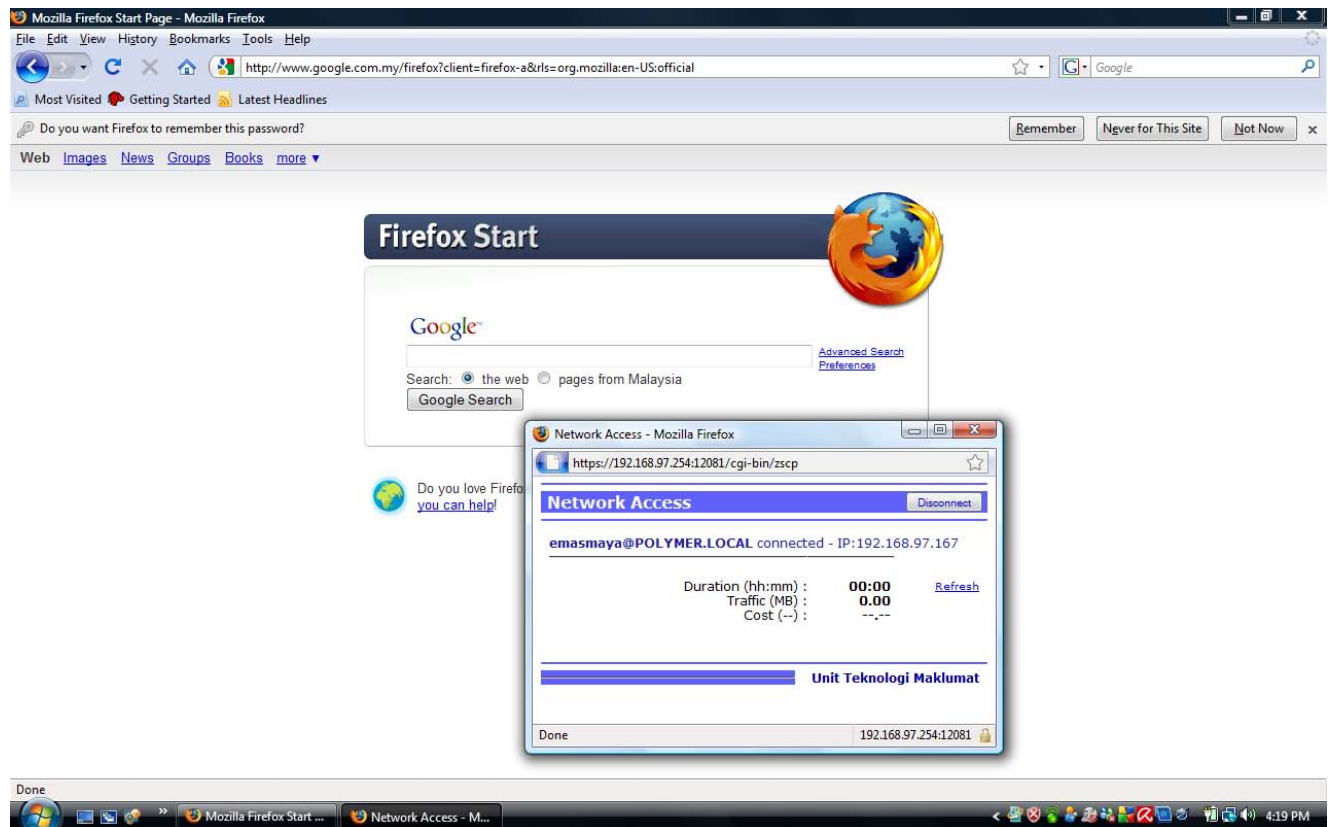




## Key In Username and Password



## Already Connected



## Change Password

\*\*\*PENUKARAN PASSWORD HENDAKLAH MENGGUNAKAN\*\*\*  
\*\*\*WIFI POLYMER CONNECTION\*\*\*

**Password Must Be  
Minimum 6 Character  
Maximum 12 Character**



**POLITEKNIK MERLIMAU MELAKA**

WiFi Polymer Access Login

X.509 Login

Username   
Password   
Domain

**Click**

  [Info](#)

Unit Teknologi Maklumat



There is a problem with this website's security certificate.

The security certificate presented by this website was not issued by a trusted certificate authority.  
The security certificate presented by this website was issued for a different website's address.

Security certificate problems may indicate an attempt to fool you or intercept any data you send to the server.

We recommend that you close this webpage and do not continue to this website.

 [Click here to close this webpage.](#)

 [Continue to this website \(not recommended\).](#)

 [More information](#)

**Click**





Type : <https://192.168.97.254>

Username : LoginID

Password : \*\*\*\*\*



Username   
Password

Click



Login Password



*emasmaya* session  
[Logout](#)

#### X.509 user certificate

Subject: OU=Users, CN=emasmaya  
Status : OK  
Expiration : Mar 3 07:24:00 2010 GMT

View Export ☒ Key PKCS#12 (PFX) ☐ Protected by password

Click



Change Password

Type Current Password

Type New Password

CPW - Windows Internet Explorer  
https://192.168.97.254/cgi-bin/kerbynet?Section=NoAdminSr Certificate Error

User emasmaya

Current Password  
\*\*\*\*\*

New Password  
\*\*\*\*\*

Confirm Password  
\*\*\*\*\*

Change Cancel

Done Internet 100%

Click



## Already Change Password

Click



## Logout

**ZEROSHELL**  
Net Services

Click

[emasmaya session Logout](#)



### X.509 user certificate

Subject: OU=Users, CN=emasmaya  
Status : OK  
Expiration : Mar 3 07:24:00 2010 GMT

Change Password

View Export ☒ Key PKCS#12 (PFX) ☐ Protected by password